



ACEP16 Daily News

MANDALAY BAY • LAS VEGAS, NV • OCTOBER 16-19, 2016 • WWW.ACEP.ORG/ACEP16

SUNDAY ISSUE

PEER IX

MEET THE EDITOR OF PEER IX TODAY!

Stop by the ACEP Bookstore in the Exhibit Hall to meet **Mary Jo Wagner, MD, FACEP**, the editor of the all-new *PEER IX*. *PEER IX* has 100 percent brand-new content, a new user interface, and continual updates to get you "closest to the boards." Dr. Wagner will be in the bookstore from 10–11 a.m.

TURN TO PAGE 5 FOR MORE INFORMATION.

ACEP RESEARCH FORUM

DON'T MISS THE RESEARCH FORUM

NEW THIS YEAR! Research Forum abstracts will be available to view near the course rooms and arranged by subject to enhance your learning experience. This year's three-day electronic showcase is larger than ever and has been integrated like never before throughout the ACEP annual meeting.

TURN TO PAGE 8 FOR MORE INFORMATION.

WELCOME FROM THE PRESIDENT

Billing Practices, Diversity, and More on ACEP's Agenda

by REBECCA PARKER, MD, FACEP



Dr. Parker

VIVA ACEP16 IN LAS VEGAS! This annual meeting is a great opportunity to spend time networking with our colleagues from all over the United States and around the world. It is a time for outstanding CME, research discovery, and perhaps even more important, it is a time to be reenergized to bring our passion for excellence to our practice.

As your new President, I personally want to encourage you to attend as many Section and Committee meetings as possible so that you can appreciate the breadth and depth of the interests of our members and colleagues from other disciplines. Challenge yourself to learn from as many offerings as possible at ACEP16. The more voices we have, the stronger we will be.

Please also note that I am gratefully accepting the baton of leadership from Immediate Past-President Jay A. Kaplan, MD, FACEP, in a continuous, sustained, multiyear effort on our specialty's

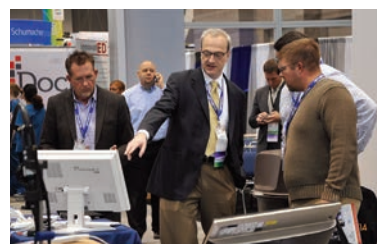
CONTINUED ON PAGE 2

QUALITY

Improve Quality with CEDR and E-QUAL

AS PART OF ITS ONGOING commitment to providing the highest quality of emergency care, ACEP has developed the Clinical Emergency Data Registry (CEDR) and the Emergency Quality Network (E-QUAL). These first-of-their-kind networks support emergency physicians' efforts to improve quality and practice in all types of emergency departments, even as practice and payment policies change over the coming years.

TURN TO PAGE 4
FOR MORE INFORMATION.



JEFF KASH

TECHNOLOGY

See the Latest at innovatED

BACK FOR A FOURTH YEAR, innovatED will be featured in the Exhibit Hall Sunday through Tuesday. Presented by Janssen Cardiovascular, Pharmaceutical Companies of Johnson and Johnson, Mallinckrodt Pharmaceuticals, and Samsung NeuroLogica, this space features a self-guided tour of the latest emergency medicine technology and services, presented by dozens of companies.

TURN TO PAGE 12
FOR MORE INFORMATION.

PLUS



ANDREA MEAD CROSS

OPENING SESSION

DON'T GIVE UP

IMPORTANT ADVICE
FOR EMERGENCY
MEDICINE AND
DISTANCE SWIMMING

SEE PAGE 3



JEFF KASH

OPENING PARTY

CELEBRATE YOUR SPECIALTY SUNDAY NIGHT

SEE PAGE 3



HOT SESSIONS

SEE PAGE 6

Get Answers Fast With The ACEP16 Twitter HelpDesk



Are you far away from the ACEP booths and need a question answered—FAST? Hit us up on the ACEP-staffed ACEP16 Twitter HelpDesk and we'll respond ASAP.

Tweet @acepvegas16 and we'll get back to you with answers.

Connect Yourself



FREE Wi-Fi

- More Than 350 Courses and Labs
- World's Largest EM Exhibit Hall
- Network During Events and Parties

FROM THE PRESIDENT | CONTINUED FROM PAGE 1

behalf to attain our goals. Jay has done an outstanding job representing us, and I look forward to his continued contributions.

Let me take this opportunity to share with you some of the major initiatives that our College—supported by Committee members, staff, the Board of Directors, and hopefully your assistance—will be working on this year.

- In accordance with the ACEP strategic plan, we want our members to receive great benefits and services that are personalized for their interests and where they are in their careers. We also want to find ways to enhance emergency department operations to ensure long, fulfilling, healthy careers. This includes ways to support emergency physicians moving to and working in relatively underserved areas, such as rural and inner-city sites.

- We continue our focus on an issue of years past, the lack of access to mental health resources for psychiatric and drug-dependent patients. We have convened a coalition of specialists and medical societies to investigate programs that have been successful in parts of the country. We will then build upon those models and attempt to promulgate them nationally. We will continue to use our voices and experience to assist the government in drafting opioid and psychiatric regulations.

- In the Affordable Care Act era, it is paramount that ACEP delineates and promotes the incredible value we provide in caring for patients 24/7/365. We need to help drive health care reform in our role as incredibly adept diagnosticians who execute efficient workups and timely initiation of critical care. On the other hand, we also have to be stewards of resources and recognize when care would be considered ineffective and extraordinary, such as at the end of life.

- ACEP is working hard to support you and your practice during the implementation of the Medicare Access and Chip Reauthorization Act (MACRA), otherwise known as the Sustainable Growth Rate repeal. This legislation creates bonus programs for physicians related to the quality of care we deliver. As the acute care specialists, emergency physicians are well positioned to create a better practice for ourselves with this new law. Through ACEP's clinical registry CEDR, and the alternative payment models the ACEP task force designed, ACEP is working hard to get you the infrastructure you will need as MACRA is implemented in 2017.

- ACEP will be continuing the battle against dishonest billing practices that harm our patients, as well as our fellow emergency medicine practitioners. In May, the Board

We need to help drive health care reform in our role as incredibly adept diagnosticians who execute efficient workups and timely initiation of critical care. On the other hand, we also have to be stewards of resources and recognize when care would be considered ineffective and extraordinary, such as at the end of life.

—Dr. Parker

of Directors moved to sue the federal government over the unclear and easily abused language of the “greatest-of-three” rule, after lengthy discussions and guidance with federal officials led nowhere. I look forward to advocating on your behalf, as well as on behalf of our patients. ACEP will continue working with our Government Affairs Office and our Reimbursement Committee experts to have a reasonable and logical resolution to the confusing and inconsistent regulations created by the Centers for Medicare & Medicaid Services regarding the two-midnight rule, the three-day-stay rule, and observation versus admission status.

- Last but not least, we must increase diversity and inclusion and cultural sensitivity in our organization, among our membership and other practitioners of emergency medicine, and for our patients. Having physicians, advanced practice providers, nurses, and other staff with wide and varied backgrounds of gender, generation, race, religion, and LGBTQ groups (among many other factors) will increase the quality of care we are able to provide for our patients and the breadth of knowledge we are able to share among ourselves. It will help our efforts to reduce health disparities. I look forward to continuing discussions about how we can encourage diversity and inclusion in ACEP, our workplaces, and our clinical practices.

Enjoy your time at ACEP16. I look forward to serving you. ☺

DR. PARKER is president of ACEP; an attending emergency physician with West Suburban Medical Center in Oak Park, Illinois; senior vice president of Envision Healthcare; and president of Team Parker LLC, a consulting group. Dr. Parker is also a clinical assistant professor at the Texas Tech El Paso department of emergency medicine.

ACEP16 Daily News

EDITORIAL STAFF

EDITOR

Dawn Antoline-Wang
dantolin@wiley.com

ART DIRECTOR

Paul Juestrich
pjuestri@wiley.com

ACEP STAFF

EXECUTIVE DIRECTOR

Dean Wilkerson, JD, MBA, CAE
dwilkerson@acep.org

ASSOCIATE EXECUTIVE DIRECTOR, MEMBERSHIP AND EDUCATION DIVISION

Robert Heard, MBA, CAE
rheard@acep.org

DIRECTOR, MEMBER COMMUNICATIONS AND MARKETING

Nancy Calaway
ncalaway@acep.org

COMMUNICATIONS MANAGER

Noa Gavin
ngavin@acep.org

PUBLISHING STAFF

EXECUTIVE EDITOR/PUBLISHER

Lisa Dionne
ldionne@wiley.com

ASSOCIATE DIRECTOR, ADVERTISING SALES

Steve Jezzard
sjezzard@wiley.com

ADVERTISING STAFF

DISPLAY ADVERTISING

Dean Mather or Kelly Miller
mjmrvica@mrsvica.com
(856) 768-9360

CLASSIFIED ADVERTISING

Kevin Dunn

kdunn@cunnasso.com

Cynthia Kucera

ckucera@cunnasso.com

Cunningham and Associates (201) 767-4170

INFORMATION FOR SUBSCRIBERS

ACEP16 Daily News is published on behalf of the American College of Emergency Physicians by Wiley Subscription Services, Inc., a Wiley Company, 111 River Street, Hoboken, NJ 07030-5774. Printed in the United States by TriStar Publishing Inc., Overland Park, KS. Copyright © 2016 American College of Emergency Physicians. All rights reserved. No part of this publication may be reproduced, stored, or transmitted in any form or by any means and without the prior permission in writing from the copyright holder. The ideas and opinions expressed in ACEP16 Daily News do not necessarily reflect those of the American College of Emergency Physicians or the Publisher. The American College of Emergency Physicians and Wiley will not assume responsibility for damages, loss, or claims of and kind arising from or related to the information contained in this publication, including any claims related to the products, drugs, or services mentioned herein. The views and opinions expressed do not necessarily reflect those of the Publisher, the American College of the Emergency Physicians, or the Editors, neither does the publication of advertisements constitute any endorsement by the Publisher, the American College of the Emergency Physicians, or the Editors of the products advertised.



ACEP16 Kickoff Party Takes Over Caesar's Palace Club, Omnia

GET READY TO PARTY!



ACEP has teamed up once again with **ECI Healthcare**, a **Schumacher Clinical Partner**, to kick off ACEP16 7 p.m. to midnight, Sunday, Oct. 16. ACEP16 registrants are invited to spend the night at Omnia, a multilevel venue that encompasses

a seductive ultra-lounge, a high-energy main room and mezzanine, and a breathtaking rooftop garden showcasing panoramic views of the Las Vegas Strip.

Best of all, it's free with ACEP16 registration. All registrants, guests, and exhibitors are invited to attend, badge required for admittance. Attire is casual.

Be sure to bring proper identification with you—you must be 21 or older with ID to enter; a passport is required for international guests.

JEFF KASH

emCareers.org LIVE is BACK at ACEP16

BACK BY POPULAR DEMAND! COME BY ACEP ALLEY IN OCEANSIDE FOYER SUNDAY 9:30 A.M.–7 P.M., AND MONDAY AND TUESDAY 9:30 A.M.–5 P.M. TO ACCESS GREAT CAREER RESOURCES.

Be sure to sign up for a free CV consultation. Receive personal, expert advice on how to make your CV shine, learn what employers are looking for, and craft a CV that highlights all of your skills and expertise.

Visit the official job bank of ACEP and EMRA, emCareers.org, and:

- Find nearly 1,000 EM openings.
- Register for job alerts to take control of your job search. *Be sure to register on site for a chance to win one of three \$100 American Express Gift Cards.*
- Search career development resources.

emCareers.org
WHERE DO YOU WANT TO BE?



ANDREA MEAD CROSS

OPENING SESSION

DON'T GIVE UP

Important advice for emergency medicine and distance swimming

by RICHARD QUINN

MOTIVATIONAL SPEAKER DIANA NYAD is sure to inspire as the keynote speaker of the ACEP16 Opening Session, which will tell her life story. In the 1970s, she was known for breaking long-distance swimming records. In 2013, at age 64, and on her fifth and final try, she fulfilled a lifetime dream by swimming 110 miles from Cuba to Florida.

Diana Nyad
Sunday, Oct. 16
8–9:30 a.m.
Mandalay Bay Ballroom H

Her message remains as simple as it strong: Don't give up. Ever.

"I don't care what business you're in," Ms. Nyad said. "I don't care if you're a stockbroker wearing a \$5,000 suit in Manhattan or you're an ER doctor in Las Vegas, we all have the desire to chase our dreams and get over our obstacles. And if we just don't give up, we will get to that other shore." ☺

RICHARD QUINN is a freelance writer in New Jersey.

DON'T BE CAMERA SHY—COME ON BY!

STUDIO ACEP OPENS SUNDAY AT 9:30 A.M. IN ACEP ALLEY, OCEANSIDE FOYER, AND DOESN'T SHUT DOWN UNTIL THE CAMERA CALLS IT QUITS AT 5 P.M.



Get your picture taken by a professional photographer and we'll send you the finished digital headshot after the convention, absolutely free. Use it

for your LinkedIn page, Facebook profile, or however you'd like. While you're there, please help ACEP with some promotional images. If you've seen some of your colleagues in our advertisements or conference promotions throughout the year, it's because they stopped by the studio and spent a couple of minutes with our marketing team.

While you're there, please give us a video testimonial as well. What's on your mind? What's your favorite ACEP member benefit? What do you love about emergency medicine? Say it for the camera. We very much appreciate the help!

Improve Quality with CEDR and E-QUAL



AS PART OF ITS ONGOING COMMITMENT TO providing the highest quality of emergency care, ACEP has developed the Clinical Emergency Data Registry (CEDR) and the Emergency Quality Network (E-QUAL). These first-of-their-kind networks support emergency physicians' efforts to improve quality and practice in all types of emergency departments, even as practice and payment policies change over the coming years.

CEDR

ACEP's CEDR has been approved by the Centers for Medicare & Medicaid Services (CMS) as a qualified clinical data registry. CEDR will provide a unified method for ACEP members to collect and submit Physician Quality Reporting System (PQRS) data, Maintenance of Certification (MOC), Ongoing Professional Practice Evaluation (OPPE), and other local and national quality initiatives.

Get more information, watch demonstrations, and sign up on site.

Sunday, 7 a.m.–6 p.m.

ACEP Alley, Oceanside Foyer

E-QUAL

E-QUAL seeks to enroll over 24,000 emergency clinicians and 2,000 emergency departments by 2019 in three focused learning networks designed to transform ED practice and support the triple aim of improved health outcomes, better coordination of care, and more efficient spending. E-QUAL will ensure clinicians and emergency departments meet the new CMS Merit-Based Incentive Payment System requirements for clinical practice improvement activities, receive benchmarking data to guide local quality improvement efforts, earn Part IV MOC and CME, and receive free access to toolkits and resources including best practices, sample guidelines, and key talking points. Sign up for E-QUAL on site to participate in our three planned learning collaboratives:

- Improving outcomes for patients with sepsis.
- Reducing avoidable imaging in low risk patients through implementation of ACEP's *Choosing Wisely* recommendations.
- Improving the value of ED chest pain evaluation by reducing avoidable admissions in low-risk patients with chest pain.

Get more information on site:

Sunday, 7 a.m.–6 p.m.

ACEP Alley, Oceanside Foyer

You are invited to a Lunch Product Theater Presentation at the **American College of Emergency Physicians Annual Scientific Assembly 2016**

THROMBOSIS: DVT/PE

AN EXPLORATION IN RISK REDUCTION

SUNDAY, OCTOBER 16, 2016

10:30 AM – 11:15 AM

Mandalay Bay

Mandalay Bay Ballroom I
Las Vegas, Nevada

Gregory Fermann, MD, FACEP

Professor and Executive Vice Chairman
Director, Clinical Trials Center
Department of Emergency Medicine
University of Cincinnati College of Medicine
Cincinnati, Ohio



PROGRAM DESCRIPTION

This lecture will discuss treatment options for patients with deep vein thrombosis and pulmonary embolism and how they can reduce the risk of recurrent thrombotic events.

In adherence with PhRMA guidelines, spouses or other guests are not permitted to attend company-sponsored programs.

For all attendees, please be advised that information such as your name and the value and purpose of any educational item, meal, or other items of value you receive may be publicly disclosed. If you are licensed in any state or other jurisdiction, or are an employee or contractor of any organization or governmental entity, that limits or prohibits meals from pharmaceutical companies, please identify yourself so that you (and we) are able to comply with such requirements.

Please note that the company prohibits the offering of gifts, gratuities, or meals to federal government employees/officials. Thank you for your cooperation.

This promotional educational activity is not accredited. The program content is developed by Janssen Pharmaceuticals, Inc. Speakers present on behalf of the company and are required to present information in compliance with FDA requirements for communications about its medicines.

The personal information you provide may be used to contact you about your request to attend the Janssen Pharmaceuticals, Inc., educational program using your preferred method of communication as indicated by you. This information may be shared with Janssen Pharmaceuticals, Inc., its affiliates, and a third party for the sole purpose of completing your registration for this program and as required by law.

This symposium is not a part of the official Scientific Assembly educational program as planned by ACEP's Educational Meetings Committee.

Supported by Janssen Pharmaceuticals, Inc.



Help Make #ACEP16 a Trending Topic

What did @gruntdoc say about that lecture this morning? What does @jeremyfaust look forward to at innovatED? How lost did @srrezaie get in the hotel trying to get to the Exhibit Hall? What are you up to? ACEP's social media reach skyrocketed last year—so much so that ACEP's conference hashtag was one of Twitter's most trending topics. Let's make #ACEP16 even more popular. Follow @ACEPnow, and remember to check out www.facebook.com/ACEPfan for updates and images from parties and special sessions.

Don't Miss ACEP Alley and the Resource Center

ACEP IS BRINGING YOU BIGGER AND BETTER THIS YEAR AT ACEP16! These one-stop-shops for everything ACEP are conveniently located. The Resource Center can be found in the Exhibit Hall, and ACEP Alley is in the Oceanside Exhibit Hall.

ACEP GO

Earn points, gain notoriety, and compete with your friends. Right on the ACEP16 Mobile App, play ACEP Go by checking in at designated locations marked with the ACEP Go symbol. Earn points and ACEP16 fame while learning more about what ACEP has to offer you.

ACEP Alley

Bridging the two Exhibit Halls, here you'll find a wealth of ACEP-related resources. Stop by emCareers.org LIVE, the Emergency Medicine Foundation Silent Auction, the CEDR/E-QUAL Information Desk, and Studio ACEP—all of which have extended hours.



JEFF KASH

Annals of Emergency Medicine

Ask the Deputy Editors! Meet and bring your questions for *Annals* Deputy Editors David L. Schriger, MD, MPH, and Donald M. Yealy, MD, at the *Annals* kiosk in the ACEP Resource Center. These deputies know the pearls and pitfalls of manuscript submission, and look forward to answering your questions and providing tips on manuscript preparation to maximize acceptance. Dr. Schriger will be at the *Annals* kiosk at 2 p.m. Sunday. Dr. Yealy will be at the *Annals* kiosk at 2 p.m. Tuesday.

Annals will also host a #FOAMed bar on Monday from 1-2:30 p.m. Discover *Annals*' free content and ask your #FOAMed and other social media questions. You can find other answers from the leading emergency medicine peer-reviewed journal in the ACEP Resource Center during exhibit hours. At each session, there will be a raffle to give away several \$50 Amazon gift cards to attendees.

ACEP Bookstore

Check out the variety of emergency medicine titles available for purchase on-site, including the brand-new *PEER IX*. *PEER IX* gets you "closest to the boards" with 100 percent new content, a brand new user interface, continual updates, and more. Stop by for more information today. Be sure to participate in our Booth Visitor Program for a chance to win one of four valuable prizes. Remember, ACEP members receive special pricing on all products.

ACEP Podcast Recording Booth

New this year! See some of your favorite podcasters in action as they interview some of the biggest names in emergency medicine right on the ACEP16 Exhibit Hall floor.

ACEP Resource Center

This information-exchange area showcases information on a wide variety of ACEP benefits and services, as well as emergency medicine issues. ACEP leaders and staff members will be available to answer your questions, discuss college policy and direction, and provide information on useful and novel products and resources from ACEP. ☺



JEFF KASH

ACEP Wellness Center

ACEP members are invited to visit the ACEP Wellness Center and assess their level of well-being. The Wellness Center offers services to ACEP members including blood pressure checks, blood chemistry (including HgbA1C), body composition screening, flu vaccine, wellness-related resource materials, and a burnout questionnaire with personalized feedback. This is a \$160 value but is only \$50 for ACEP members. Admission tickets to the Wellness Center may be purchased at the ACEP16 registration area or at the nearby ACEP Bookstore.

Supported in part by HBI—Hagan Barron Intermediaries. ☺

SEMPA AND NEVADA ACEP CHAPTER RECEPTION SET FOR SUNDAY

Join the Nevada Chapter of ACEP (NV ACEP) and Society of Emergency Medicine Physician Assistants (SEMPA) on Sunday, 6-7:30 p.m., at Eyecandy Sound Lounge & Bar at the Mandalay Bay hotel and casino. Past, present, and prospective NV ACEP and SEMPA members are welcome. Network with colleagues and leaders from each organization to learn more about what they have to offer you. ACEP leaders are also encouraged to join this event.

COME BY AND SPEND SOME TIME WITH NV ACEP AND SEMPA BEFORE THE ACEP16 KICKOFF PARTY.



TAKE ADVANTAGE OF THE NEMPAC DONOR LOUNGE

NEMPAC is a critical tool in ACEP's government affairs strategy to strengthen our influence on many legislative initiatives affecting the practice and delivery of emergency medical care. NEMPAC activities at ACEP16 will recognize the support of our most generous donors and highlight our agenda for the coming term. Because of ACEP member support, NEMPAC has become one of the top medical PACs in the country and is a respected political voice in Washington, D.C.

NEMPAC VIP DONOR LOUNGE

SUNDAY

**Tuesday, 8 a.m.–5 p.m., Surf B
(NEMPAC VIP access pass required)**

NEMPAC's highest donors (\$600 and above, \$60 for residents in 2016) are invited to stop by and relax in the NEMPAC VIP Lounge. Donors will receive access to complimentary breakfast, lunch, laptop/printer usage, and professional neck and shoulder massages. Give-A-Shift donors will receive a special thank-you gift from the NEMPAC Board.





Hot Sessions

Learn to Spot Three Critical ECG Findings

by RICHARD QUINN

Qwaves and atrioventricular (AV) issues and cor pulmonale, oh my. All three can be pitfalls while reading the findings of electrocardiography (ECG), yet emergency physicians are expected to not misread them as precursors to serious pathology. However, veteran emergency physician Jerry Jones, MD, FACEP, said a lack of training can lead to misdiagnoses.

"It's really not difficult to understand what causes problems in interpreting the ECG in terms of properly evaluating what's happening in Lead III, understanding AV dissociation, or recognizing acute cor pulmonale," said Dr. Jones, founder of Medicus of Houston. "It's a matter of looking for abnormalities when you're perhaps expecting an abnormality to jump out at you from the ECG. They aren't going to do that! You need to look for them and you need to understand exactly what you're looking for. They're not hard to find, you just need to be able to recognize them when you do see them."

"It's a very important area that needs to be understood by the physician so that a really unfortunate mistake doesn't occur."

—Dr. Jones

Dr. Jones will discuss the issue during a rapid-fire session, "Mastering Three Problems that Can Kill in Emergency Electrocardiography: An Advanced Approach." He will focus on Q waves and negative complexes in Lead III; recognizing the difference between AV dissociation and third-degree AV block; and the manifestations of acute and chronic cor pulmonale.

"It's a very important area that needs to be understood by the physician so that a really unfortunate mistake doesn't occur," he said.

RICHARD QUINN is a freelance writer in New Jersey.



Dr. Jones

RAPID FIRE: MASTERING THREE PROBLEMS THAT CAN KILL IN EMERGENCY ELECTROCARDIOGRAPHY: AN ADVANCED APPROACH

Sunday, Oct. 16
12:30–12:55 p.m.
Mandalay Bay Ballroom D

Boost Your Ability to Diagnose and Treat Ophthalmic Emergencies

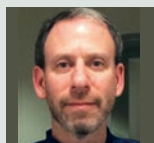
by VANESSA CACERES

Boost your comfort level with ophthalmology during today's session "Essential Ophthalmologic Procedures and Examinations," led by Gil Binenbaum, MD, MSCE, attending surgeon in the division of ophthalmology at The Children's Hospital of Philadelphia.

The session will cover a wide range of eye problems presenting to the emergency department. Many of these problems are vision threatening and can have significant short- and long-term morbidity. One area of focus during Dr. Binenbaum's talk will be the slit lamp microscope and how emergency physicians can build their comfort level with this commonly used instrument in ophthalmology. Proper use of the slit lamp helps to diagnose conditions that may otherwise be difficult to identify, ranging from corneal ulcers and foreign bodies, to uveitis, dry eye, and open globe injury. "There are many subtle but important findings that are much easier to see, or in some cases only possible to see, with the magnification and capabilities of the slit lamp," he said.

Dr. Binenbaum also will talk about how and when to measure intraocular pressure, highlighting congenital glaucoma, hyphema, and retrobulbar hemorrhage. When retrobulbar hemorrhage results in orbital compartment syndrome, the emergency physician may need to act quickly, so the session will include instruction on how to perform a canthotomy and cantholysis. "If they can diagnose the problem, then emergency physicians can do canthotomy and cantholysis. The important thing is to know what the indications are for doing it," he said. Other procedures, such as corneal foreign body removal and eyelid eversion will also be covered. Some visually-threatening problems require urgent evaluation by an ophthalmologist, and Dr. Binenbaum will highlight important red flags for consulting ophthalmology. For even more ophthalmology, Dr. Binenbaum will be giving a second talk on Sunday called "Visual Diagnosis in Emergency Medicine: Eye Can See the Problem." That talk will focus broadly on the red eye and vision loss.

VANESSA CACERES is a freelance medical writer based in Florida.



Dr. Binenbaum

ESSENTIAL OPHTHALMOLOGIC PROCEDURES AND EXAMINATIONS

Sunday, Oct. 16
11:30 a.m.–12:20 p.m.
Mandalay Bay Ballroom F

Discover the Ins and Outs of Pressor Agents in the Critically Ill

by VANESSA CACERES

One tricky area of emergency management is the use of pressor agents for severe hypotension. In his presentation "Under Pressor! Utilizing IV Pressors in the ED," Peter M. DeBlieux, MD, FACEP, professor of clinical medicine and chief medical officer at University Medical Center at New Orleans, will help clear up some confusion.

Dr. DeBlieux will review the basics of blood pressure support with IV pressor agents and give take-home tips on how to manage patients with severely low blood pressure.

One specific area he will address is sepsis management of blood pressure using both norepinephrine to improve blood pressure and the inotropic agent dobutamine to improve cardiac performance. He also will cover utilization of the same two agents in the setting of cardiogenic shock as a bridge to more invasive approaches, which can include intra-aortic pump, left ventricular assist devices, coronary artery stenting, and coronary artery bypass grafting.

The presentation also will cover:

- Systolic blood pressure
- The use of mean arterial blood pressure as a goal of therapy rather than systolic blood pressure. "Mean arterial blood pressure measures more closely approximate organ perfusion pressures and are more physiologic," Dr. DeBlieux said.
- The use of dobutamine as a vasoactive agent and not a true vasopressor
- Pulse dosing of vasopressors

Expect some take-home tips from Dr. DeBlieux, such as the importance of ultrasound with this patient group. "Bedside utilization of ultrasound should be used in close concert with vasopressor therapy to develop a treatment plan and to assess for response," he said.

VANESSA CACERES is a freelance medical writer based in Florida.



Dr. DeBlieux

RAPID FIRE: UNDER PRESSOR! UTILIZING IV PRESSORS IN THE ED

Sunday, Oct. 16
11:30–11:55 a.m.
Mandalay Bay Ballroom D

Should You Be Using Ketamine and Transaxenemic Acid for Trauma Patients?

by RICHARD QUINN

The dangers of ketamine and transaxenemic acid (TXA) have been greatly exaggerated, according to a pharmacist who hopes to get emergency physicians talking about using the often-overlooked medications at this year's annual meeting.

"People seem to be hesitant to use them based on old data and what I want to present to them is newer data that should help convince them that they are safe to use in a trauma patient," said Bryan Hayes, PharmD, FAACT, an emergency medicine pharmacist and toxicologist at Massachusetts General Hospital in Boston.

Dr. Hayes will present a rapid-fire session titled, "Traumacology: Drugs for the Trauma Bay." His goal is to get people talking about the efficacy of ketamine and TXA, both shown in recent data to be useful after years of data that cast doubts on their usefulness.

Attend this session to find out why ketamine and TXA are due for a change.

He plans to suggest that physicians who don't have access to the medications ask for them to be added to their formularies. He'll try to fight misperceptions, including that ketamine causes worsening intracranial pressure increases in trauma patients.

"We've had so many times in medicine...where we've been practicing a certain way based on what we thought was good data for many years," he said. "All of a sudden one, or two, or three new trials come out that show something different and it's just hard to say, 'Well, we've been doing this for so long, should these new trials really change what we do or should we just continue doing what we had been doing?'" Attend this session to find out why ketamine and TXA are due for a change.

RICHARD QUINN is a freelance writer in New Jersey.



Dr. Hayes

RAPID FIRE: TRAUMACOLOGY: DRUGS FOR THE TRAUMA BAY

Sunday, Oct. 16
1:00–1:25 p.m.
Mandalay Bay Ballroom B

Better Living Through Apps

by RICHARD QUINN

Hand-held smartphones and tablets have revolutionized the world in the past few years as the ubiquitous devices and all the mobile applications they can store put information at a digital fingertip's reach. But what is their role in the emergency department?

Resa Lewiss, MD, director of point-of-care ultrasound in the department of emergency medicine and an associate professor at the University of Colorado School of Medicine, hopes to help answer that question during her rapid-fire session, "There's An App for That: Hand-Held Devices and Applications that You Should Know About."

"They say by the time a textbook comes out it's already outdated," she said. "If you really want to know what's happening, you need to adopt another means of acquiring information. The advantage of apps is there's a quickness and a time efficiency. It's right in your pocket and you can pull it up right away."

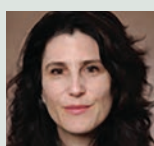
Dr. Lewiss plans to focus on two types of apps: professional and personal. Most physicians may quickly think about the value of using visual-diagnostic apps. But fewer might think to use apps that can enhance their lives outside the emergency department and make them more effective physicians.

"People need to realize that the smart phone and apps can help them as well rounded individuals, as practicing physicians."

—Dr. Lewiss

"People need to realize that the smart phone and apps can help them as well rounded individuals, as practicing physicians," she said. "The goal of this talk is that they don't just think that a medical app is all about their practice when they're in the ED, but there's a lot of apps that can enhance their lives and make them more effective physicians outside the ED." ☛

RICHARD QUINN is a freelance writer in New Jersey.



Dr. Lewiss

RAPID FIRE: THERE'S AN APP FOR THAT: HAND-HELD DEVICES AND APPLICATIONS THAT YOU SHOULD KNOW ABOUT

**Sunday, Oct. 16
1:30–1:55 p.m.
Mandalay Bay Ballroom B**

SATELLITE SYMPOSIA OFFER EVEN MORE EDUCATION OPTIONS

Industry-sponsored satellite symposia are educational, and some offer CME credit. This program is not a part of the official ACEP16 education program as planned by ACEP's educational meetings committee.

Hyperkalemia in the Emergency Department: Updates on the Current Management of a Complex Condition

SUNDAY

Mandalay Bay Ballroom L

Grantor: ZS Pharma, Inc.

6–6:30 p.m.

Registration and dinner

6:30–8 p.m.

Interactive CME activity

Own your tomorrow, today! Practice with us.

Exciting opportunities available in California, Kansas, North Carolina, Ohio, Texas, Virginia, and West Virginia!

VEP Healthcare is looking for exceptional Emergency Medicine physicians and leadership candidates to join our team.

Ask about our Sign-On Bonus and Leadership Academy!

For more information, contact:
recruiting@vephealthcare.com
925-Call VEP (225-5837)
www.vephealthcare.com



To enter our drawing and take a picture with a celebrity...

**Visit Us at
Booth #245**



Scientific Assembly **16**
LAS VEGAS
October 16 - 18 | Mandalay Bay Event Center

Founded in 1981, VEP Healthcare is a democratic, provider-owned organization that offers flexibility and a path to ownership after just 150 hours of service.

Save These Dates

ACEP's Upcoming 2016 - 2017 Educational Meetings

November 14-18, 2016

Emergency Department Directors Academy - Phase I
Omni Park West - Dallas, TX
acep.org/edda

SOLD OUT



February 6-10, 2017

Emergency Department Directors Academy - Phase I
Omni Park West - Dallas, TX
acep.org/edda



February 20-24, 2017

Reimbursement & Coding 2017
The Westin Mission Hills Golf Resort & Spa - Palm Springs, CA
acep.org/rc



March 12-15, 2017

Leadership & Advocacy Conference
Grand Hyatt - Washington, DC
acep.org/lac



April 6-8, 2017

Emergency Medicine Academy - Critical Decisions with Master Clinicians
Sheraton Phoenix Downtown - Phoenix, AZ
acep.org/EMacademy



April 25-27, 2017

Advanced Pediatric Emergency Medicine Assembly
Paris Las Vegas - Las Vegas, NV
acep.org/pem



May 1-5, 2017

Emergency Department Directors Academy - Phase II
Omni Park West - Dallas, TX
acep.org/edda



October 30 - November 2, 2017

ACEP17 Scientific Assembly
Washington, DC
acep.org/acep17



American College of
Emergency Physicians®
ADVANCING EMERGENCY CARE

ACEL_GSE_0916



JEFF KASH

Don't Miss the Revamped Research Forum

INTEGRATE THE SCIENCE WITH THE EDUCATION AT EMERGENCY medicine's premier research event, ACEP Research Forum. This year's three-day electronic showcase is larger than ever and has been integrated like never before throughout the ACEP annual meeting.

NEW THIS YEAR!

Research Forum abstracts will be available to view near the course rooms and arranged by subject to enhance your learning experience. View and discuss original research that will impact your daily practice on the topics and issues that matter most to you and your patients. At the world's largest gathering of researchers, teachers, and practitioners of emergency medicine, you can also learn from a panel of experts during "Prime Time Practice-Changers: Highlights of the 2016 Research Forum" and interact with researchers during the wine and cheese networking socials.

Supported by The Medicines Company

SUNDAY SCHEDULE

For a full listing of research forum presentations, see the ACEP16 Mobile App or pages 41-63 in the onsite program.

Research Forum Oral State-of-the-Art Presentations

7:30 a.m.-5 p.m.

Location: Breakers D

Electronic Abstract Session I

9:30-10:30 a.m.

- **Administration**
Location: Breakers D
- **Airway**
Location: Breakers J
- **Basic Science/Critical Care**
Location: Banyan D
- **Education**
Location: Banyan E
- **Cardiovascular**
Location: Banyan F

Electronic Abstract Session II

10:30-11:30 a.m.

- **Administration**
Location: Breakers D
- **Airway**
Location: Breakers J
- **Critical Care**
Location: Banyan D
- **Education**
Location: Banyan E
- **Cardiovascular**
Location: Banyan F

State-of-the Art: "What is EM's Role in Curbing the Firearm-Injury Epidemic?"

11:30 a.m.-Noon

Location: Lagoon I

Megan L Ranney, MD, MPH, FACEP (Moderator); Pat Carter, MD, FACEP; Marian Betz, MD

Research Forum Awards Luncheon

Noon-1 p.m.

Location: South Seas, Ballroom B
(By invitation only)

Electronic Abstract Session III

1-2 p.m.

- **Administration**
Location: Breakers D
- **Diagnostics**
Location: Breakers J
- **Emergency Medical Services**
Location: Banyan D
- **Education**
Location: Banyan E
- **Cardiovascular**
Location: Banyan F

Plenary Session 1—"Late Breakers"

2-3 p.m.

Electronic Abstract Session IV

3-4 p.m.

- **Administration/Practice Management**
Location: Breakers D
- **Diagnostics**
Location: Breakers J
- **Emergency Medical Services**
Location: Banyan D
- **Health Care Policy**
Location: Banyan E
- **Cardiovascular/Pulmonary**
Location: Banyan F

Day 1 Wrap Up

4-4:30 p.m.

Location: Lagoon I

Research Forum Wine and Cheese Networking Social

4:30-6 p.m.

Location: South Seas Ballroom B



JEFF KASH

Don't Miss These innovatED Events

innovatED OFFERS AN UNPRECEDENTED LOOK at new technology, products, and services available to emergency medicine practitioners. Don't miss out on these exciting events.

SUNDAY

Code Black: A Disaster Response

10:00–10:20 a.m.

Location: Trauma Bay 3

Dosing and Administration Overview

10:20–10:30 a.m.

Location: ED Talk Theater

Presented by Lynn Bichjian, MD

Sponsored by Mallinckrodt Pharmaceuticals

Emergent Suffering: Palliative Approaches to Common ED Cases

10:20–10:40 a.m.

Location: Palliative Care/Comfort Room

The mHealth Toolbox

10:30–11:45 a.m.

Location: Workshop Room

Building a 30,000 ER Doctor Neutral Network—Discover Lifesaving Technologies

10:40–10:50 a.m.

Location: ED Talk Theater

Presented by Vivienne Ming, PhD

Sponsored by Zoic Capital

Rethinking the Efficacy of the Split-flow ED

11–11:10 a.m.

Location: ED Talk Theater

Presented by James Lennon, AIA, ACHA,

Associate Principal and Emergency

Department Design Specialist, HKS, Inc.

Sponsored by HKS, Inc., innovatED Designer

Emergent Suffering: Palliative Approaches to Common ED Cases

1:30–1:50 p.m.

Location: Palliative Care/Comfort Room

Emergent Suffering: Palliative Approaches to Common ED Cases

2:30–2:50 p.m.

Location: Palliative Care/Comfort Room

Dosing and Administration Overview

2:40–2:50 p.m.

Location: ED Talk Theater

Presented by Christopher Tubbs, PhD

Sponsored by Mallinckrodt Pharmaceuticals

MCI Immersive Response: Active Shooter

2:50–3:20 p.m.

Location: Trauma Bay 3

EMF ADVANCES EM RESEARCH

The Emergency Medicine Foundation (EMF) is the charity of emergency physicians. Founded in 1972 by visionary leaders of ACEP, EMF invests its funds to further emergency medicine research and education. To date, EMF has awarded more than \$12 million in research grants to advance emergency medicine, science, and health policy. EMF's mission is to promote education and research that develops career emergency medicine researchers, improves patient care, and provides the basis for effective health policy. Because of its generous donors, EMF awards more than \$600,000 in emergency medicine grants each year.

EMF VIP Reception

Sunday, 6:30–8 p.m.

Hyde, Bellagio Hotel and Casino

Join loyal major donors, EMF and ACEP leaders, dedicated physician groups, and committed companies invested in emergency medicine at this annual invitation-only exclusive event. Complimentary tickets are available for EMF's \$1,000+ donors and Wiegenstein Legacy Society members. Tickets may also be purchased for \$150 in the EMF Major Donor Lounge, the ACEP16 Registration desk, or at the ACEP Bookstore.

EMF Major Donor Lounge

Sunday–Tuesday, 7:30 a.m.–4 p.m., Surf D
(By Invitation Only)

EMF donors who have given \$500 or more since January 1, 2016, and Wiegenstein Legacy Society members are invited to this relaxed setting offering breakfast, lunch, and snacks; a computer; a printer; and charging stations. Did you miss your chance to buy a brick for Pave the Way? No worries, you can pick one up here.

EMF Silent Auction

Sunday–Tuesday, 7:30 a.m.–5:30 p.m.
ACEP Alley, Oceanside Foyer

The popular favorite souvenir shop returns to ACEP16. Stop by the EMF Silent Auction for a chance to bid on hundreds of items, with proceeds benefitting EMF. Items include sports, music, and celebrity memorabilia; jewelry; artwork; vacation getaway packages donated by members; and more! Managed by All Star Enterprises.

EMF Emergency
Medicine
Foundation
research • education • patient care

USE THE ACEP16 MOBILE APP

Maximize your experience! The app is available in the iOS App Store and the Google Play store. Use your login credentials from your ACEP16 registration to get schedules, syllabi, surveys, and the all-new ACEP GO game.



2016 ACEP Leadership AWARD WINNERS

Please join ACEP in congratulating the recipients of the College's most prestigious awards. Some of these winners will be recognized at the President's Awards Banquet on Tuesday night, while others will receive their awards at Section, Council, or Research Forum events.



JOHN G. WIEGENSTEIN LEADERSHIP AWARD

Col. Linda L. Lawrence, MD, FACEP



Dr. Lawrence is a Past President and Past Chair of ACEP's Board of Directors and has served more than 24 years as an emergency physician and physician executive in the Air Force in a variety of roles. She is a recognized executive leader, academician, and clinician, and some highlights of her career include roles as associate professor and commandant at Uniformed Services University School of Medicine in Bethesda, Maryland; chief medical officer at David Grant Medical Center in Fairfield, California; chief of the department of emergency medicine at Wilford Hall Medical Center in San Antonio; Air Force Medical Service chief consultant for emergency medicine; deployed deputy hospital commander in Balad, Iraq; hospital commander at Aviano Air Base in Italy; director of healthcare operations for the Air Force Medical Support Agency; and, most recently, special assistant to the Air Force surgeon general for Trusted Care Transformation. She is currently retiring from the Air Force and looks forward to coming back to her roots as an emergency physician and beginning her new role as executive vice president of organizational and cultural integration with US Acute Care Solutions.

Dr. Lawrence and her husband James have two children. Their daughter is a junior at Liberty University in Lynchburg, Virginia, and their son is a cadet at the U.S. Coast Guard Academy in New London, Connecticut.

JOHN A. RUPKE LEGACY AWARD

Kathleen Cowling, DO, FACEP



Dr. Cowling was born on February 29, 1964, making her a leap year baby. Within 3 months, tragedy struck and took her father in a car accident. Growing up, she and her mother traveled the world, and Dr. Cowling began to develop her love of science and biology early. Skipping grades 8 and 12, she started college at 16 after spending the summer doing research in the physiology lab at Michigan State University (MSU) in East Lansing on cat brains and blood flow changes under increased levels of carbon dioxide. She also became the youngest person in Michigan to become licensed as an EMT.

Completing her BS in physiology at MSU, she had already started graduate level work in biomechanics. She completed her MS while enrolling in the DO program at MSU. She grad-

uated from MSU College of Osteopathic Medicine in 1991, earning their award for the most outstanding woman graduate of the class. During college, she met her husband Robert. They were married on Mackinac Island right before Dr. Cowling started her internship at Ingham Regional Medical Center in Lansing, Michigan, where she was able to learn and train with Dr. John Wiegenstein.

After internship, she continued her training in Lansing at Sparrow Hospital, doing her residency in emergency medicine and finishing as chief resident in 1995. Dr. Cowling was offered the position as core faculty in a new residency in Saginaw, Michigan. Taking a risk that teaching others how to practice emergency medicine was going to be her passion, she took the job which she then had for two decades until taking over the role as program director this past year. Dr. Cowling attributes ACEP's Teaching Fellowships to helping her gain the knowledge and courage to tackle this incredible role.

Dr. Cowling has worked with the Michigan Chapter for over 25 years, serving on the Board of Directors and as Chapter President. The Chapter awarded her their highest awards—the Ron Krome Award and the Legacy Award. Dr. Cowling was elected to the national ACEP Board of Directors in 2005. After her term on the Board was completed, she was appointed commissioner by Governor Rick Snyder to serve on Michigan's Certificate of Need, which she is still involved with today.

When not teaching or working clinically, Dr. Cowling and her husband are always seeking out adventures either playing with the German shepherds, watching movies, or going on trips to explore new places.

Amazingly, Dr. Cowling has also taken on getting her MBA, which she hopes to complete in spring 2017.

JAMES D. MILLS OUTSTANDING CONTRIBUTION TO EMERGENCY MEDICINE AWARD

Lewis R. Goldfrank, MD, FACEP



Dr. Goldfrank has worked at Bellevue Hospital Center and New York University Medical Center for the last 37 years. He is currently the Herbert W. Adams Professor of the Ronald O. Perleman Department of Emergency Medicine at New York University. He recently retired as the first chairman of the department. He is also the medical director of the New York City Health Department's Poison Center. He attended Clark University in Worcester, Massachusetts, Johns Hopkins School of Medicine in Baltimore, and the University of Brussels, Belgium.

His efforts have led to the development of NYU's emergency medicine and medical toxicology residencies. He served as chair of the American Board of Emergency Medicine's sub-board on medical toxicology, the American Board of Medical Toxicology, and the Society for Academic Emergency Medicine. His entire career has been spent working in the public hospitals of New York City emphasizing the role of emergency medicine in improving access to care, public health, public policy, and medical humanism.

His investigations in preparedness include developing and leading a consortium on preparedness with the NYC Department of Health, leading the New York University School of Medicine Consortium on Preparedness, being the principal investigator for a Department of Homeland Security Large Scale Emergency Readiness grant, and being a co-principal investigator on a Centers for Disease Control and Prevention Public Health Research grant, the Health Protection Research Initiative.

Dr. Goldfrank is a member of the National Academy of Sciences and chaired the Institute of Medicine Committees on Responding to the Psychological Consequences of Terrorism, Evaluation of the Metropolitan Medical Response Systems Program, and Preparing for an Influenza Pandemic: Personal Protective Equipment for Healthcare Workers.

OUTSTANDING CONTRIBUTION IN EDUCATION AWARD

James R. Roberts, MD, FACEP



Dr. Roberts is currently professor of emergency medicine and senior consultant in medical toxicology at Drexel University College of Medicine, and director of medical toxicology at Mercy Catholic Medical Center, both in Philadelphia.

Dr. Roberts graduated from Jefferson Medical College in Philadelphia, completed a residency in emergency medicine at the Medical College of Pennsylvania, and a fellowship in medical toxicology at New York University/Bellevue Hospital. He has established two fellowship training programs in medical toxicology, trained over 30 toxicologists, and has been medical director of the New Mexico EMS academy.

Dr. Roberts was a founding member of the Emergency Medicine Residents Association (EMRA), and served as the organization's first ACEP representative. He received recognition for academic achievement (The Hal Jayne Award) from Society for Academic Emergency Medicine (SAEM), the David K. Wagner award from American Academy of Emergency Medicine (AAEM), was profiled in Lancet, and is a member of Best Doctors in America. Dr.

Roberts has been chair of the editorial board of *Emergency Medicine News* for over 30 years, has written hundreds of columns for the *In Focus* series, and received the gold award for his work in *Emergency Medicine News* from the American Society of Healthcare Publications. He has presented continuing education lectures and scientific exhibits in the United States, Iceland, Cuba, Italy, Mexico, Malta, and Canada, and has presented CME/postgraduate courses at the annual scientific assemblies of ACEP, SAEM, and AAEM.

Dr. Roberts currently lives in Newtown Square, Pennsylvania; has been married for 40 years to Lydia; has a daughter, Martha, who is a nurse practitioner in Virginia; and has a son, Matthew, who is a video game producer in Berlin, Germany.

COLIN C. RORRIE, JR. AWARD FOR EXCELLENCE IN HEALTH POLICY

Marilyn J. Heine, MD, FACEP



Dr. Heine is an internal medicine physician who practices emergency medicine and hematology oncology in Pennsylvania. She is clinical assistant professor in the Drexel University College of Medicine department of medicine and in the Philadelphia College of Osteopathic Medicine department of emergency medicine. Born and raised in New Jersey, she attended Brandeis University in Waltham, Massachusetts, prior to receiving her MD degree at Rutgers/Robert Wood Johnson Medical School in Piscataway, New Jersey, and completing a residency and fellowship between Thomas Jefferson University Hospital and Drexel University College of Medicine in Philadelphia.

Dr. Heine is a member of the AMA Council on Legislation and previously served on the Board of Directors for AMPAC, the American Medical Association's political action committee, where she chaired the AMPAC Committee on Political Education and Communication. She is a member of the Pennsylvania Medical Society (PAMED) delegation to the AMA House of Delegates. Prior to her presidency of PAMED, Dr. Heine chaired PAMED's Executive Council on Political Advocacy and the PAMPAC Board of Directors.

Dr. Heine has held many prominent positions with ACEP, including Chair of the Federal Government Affairs Committee, is a member of PAMED's Specialty Leadership Cabinet, and Past President of the Bucks County Medical Society. She is also active in the American Society of Clinical Oncology.

Dr. Heine has received many honors that include the ACEP Council Meritorious Service Award, Hero of Emergency Medicine Award, Dr. Benjamin Rush Award, PACEP Meritori-

ous Service Award, US Senate Certificate of Distinguished Service, ACEP 911 Legislative Network Member of the Year, and the Bucks County YWCA's award for Women Who Make a Difference. She was the inaugural recipient of PAMPAC's R. William Alexander, MD, Award "for contributions to the medical profession through grassroots political involvement and advocacy."

Dr. Heine is married to Arlin Silberman, DO, an addiction psychiatrist. They reside in Dresher, Pennsylvania, and share a mutual enjoyment of gardening, cooking, and music.

COUNCIL MERITORIOUS SERVICE AWARD

Col. Marco Coppola, DO, FACEP



Dr. Coppola is a Past ACEP Council Speaker. He is presently the chief medical officer and VP for Medical Affairs for Family ER + Urgent and adjunct clinical professor of emergency medicine at the University of North Texas Health Science Center in Fort Worth. He is formerly the program director of three emergency medicine residencies, and past chair of three departments of emergency medicine. He is the recipient of numerous teaching awards and is the author of many textbook chapters and peer-reviewed articles. Col. Coppola is the deputy surgeon and chief of emergency medical services for the Texas Medical Brigade of the Texas State Guard. He served in Operation Iraqi Freedom and was the longest running commander (47 months) of the Texas Medical Command, Texas Army National Guard. He is one of only a handful of Army emergency physicians holding the Surgeon General's "A" Proficiency Designator in Emergency Medicine, and is a member of the Order of Military Medical Merit. His decorations include the Legion of Merit, the Meritorious Service Medal, six Army Commendation Medals, the Air Force Commendation Medal, and the Texas Lone Star Distinguished Service Medal. He and his wife Stacy have two sons, Antonio and Luca, two sassy shih tzus named Mia and Leelu, and a gallant boxer named Goose.

DISASTER MEDICAL SCIENCES AWARD

Andrew I. Bern, MD, FACEP



Dr. Bern is a full-time emergency physician and independent health care consultant specializing in emergency and disaster medicine, informatics, and telehealth. Since 1984, he's concentrated his work in South Florida.

As a former member of ACEP's Board of Directors, Dr. Bern served with the EMS, Critical Care, Air Medical Transport, Wilderness, and Disaster sections. He was also a founding member of the Disaster, Geriatric, Tactical, Telemedicine, and Disaster Medicine sections. On the ACEP Council, he served on the Steer-

ing Committee, on numerous Council subcommittees and on the Reference Committee.

Dr. Bern was instrumental in creating ACEP's Grant Program that has raised more than \$10 million for College projects. He was an active participant in the creation of the Health Policy Grant Program and serves as a Councilor from Florida.

Dr. Bern participated in the joint subcommittees of Reimbursement and American College of Emergency Physicians State Legislative/Regulatory Committee on the issue of fair reimbursement and model legislation, and worked on the development of the H1N1 grant project to develop recommendations for the Centers for Disease Control and Prevention and Assistant Secretary for Preparedness and Response grants.

Dr. Bern grew up in East Meadow on Long Island. He earned his BS degree from State University of New York (SUNY) at Stony Brook and his medical degree from SUNY Downstate Medical School in Brooklyn. He completed his emergency medicine residency at University of Louisville Affiliated Hospitals.

Dr. Bern lives in Coral Springs, Florida, with his wife, Judith, an early childhood educator. They are the parents of Suzanne, division director for the Tampa Jewish Community Center, and Michael, an attorney in Washington, D.C.

OUTSTANDING CONTRIBUTION IN EMS AWARD

Juliette M. Saussy, MD, FACEP



Dr. Saussy began her career as an EMT, becoming a paramedic in 1986. She graduated with a BA in sociology from Tulane University, Newcomb College in New Orleans in 1988. Dr. Saussy attended Louisiana State University (LSU) School of Medicine in New Orleans and graduated in 1994. She completed her four-year residency at Charity Hospital in New Orleans with LSU Emergency Medicine and was board certified in 2000.

Dr. Saussy's love for and experience in prehospital emergency medicine has spanned 35 years and includes being EMS medical director for New Orleans Fire Department, director and medical director for New Orleans EMS, and chief medical officer for the City of New Orleans Homeland Security Office. Hurricane Katrina hit New Orleans August 2005, just eight months after she took over the troubled system. Serving the city before, during, and after Katrina remains one of her greatest career challenges, but also one of her greatest joys.

In 2007, Dr. Saussy was diagnosed with an aggressive form of uterine cancer that metastasized to her lungs, and she spent 2007-2008 battling this disease. Blessed with an amazing team, she was able to continue to work, traveling weekly to and from Texas for treatment.

In 2010, she resigned and practiced emergency medicine full time as an assistant clinical professor of emergency medicine at LSU until joining Vidacare/Teleflex and working as

one of the medical directors of global clinical and medical affairs.

In July 2015, Dr. Saussy began as EMS medical director/assistant fire chief for DC Fire and EMS. She followed many competent EMS medical directors, and with the promise from the fire department, the deputy mayor of public safety, and the mayor, she was poised to reform a system plagued by years of controversy and intrinsic shortfalls that affected quality patient care. However, it was not to be, and on February 12, 2016, Dr. Saussy resigned. She is currently working clinically in a critical access hospital in Virginia with Riverside Physicians Group.

Dr. Saussy is married to Bob Davis, the former *USA Today* reporter who wrote the game changing EMS series "Six Minutes to Live" and lives in Alexandria, Virginia. They have five grown daughters.

OUTSTANDING CONTRIBUTION IN RESEARCH AWARD

Carlos A. Camargo, Jr., MD, DrPH, FACEP



Dr. Camargo is professor of emergency medicine at Harvard Medical School, professor of epidemiology at Harvard T.H. Chan School of Public Health, and the Conn Chair in Emergency Medicine at Massachusetts General Hospital, all in Boston.

Dr. Camargo founded and directs the Emergency Medicine Network (EMNet), an international research collaboration with more than 230 hospitals. EMNet focuses on respiratory/allergy emergencies, emergency care health policy, and other public health issues. Dr. Camargo's research also focuses on nutrition and respiratory/allergy disorders in large cohort studies and in randomized controlled trials.

Dr. Camargo is past president of the American College of Epidemiology and has served on many national committees, including those for the 2005 US dietary guidelines, 2007 National Institutes of Health (NIH) asthma guidelines, and 2010 NIH food allergy guidelines. He has more than 750 publications.

Dr. Camargo was born in Cleveland to a Colombian father and French mother. The family lived in Colombia when he was a child, but then moved more permanently to the San Francisco Bay Area. Dr. Camargo received his BA from Stanford University (1983); MPH from the University of California, Berkeley (1989); MD from the University of California, San Francisco (1990); and DrPH from Harvard School of Public Health (1996). He completed his residency at Massachusetts General Hospital (1993), and research fellowship at Brigham and Women's Hospital (1996), both in Boston.

Dr. Camargo lives in Boston with his wife, Ana Maria (Ania), who is a management consultant for several not-for-profit organizations. They have two daughters: Alexandra (Sasa), who attends Stanford University, and Camilla (Mila), who is a high school junior.

HONORARY MEMBERSHIP AWARD

Beth P. Brunner, CAE



Ms. Brunner is the executive director of the Florida College of Emergency Physicians (FCEP) and CEO of the Florida Emergency Medicine Foundation (FEMF), located in the Emergency Medicine Learning and Resource Center in Orlando.

Ms. Brunner has provided leadership for FCEP since 1986. She was instrumental in working to create FEMF in 1990. As executive director, Ms. Brunner works with many local, state, and national organizations and individuals to advocate and support emergency care providers and their patients. Ms. Brunner earned her MBA from the University of Central Florida, and has earned her Certified Association Executive (CAE) designation. She resides in Orlando.

HONORARY MEMBERSHIP AWARD

Barbara Burgess



Ms. Burgess has been the part-time executive director for Colorado ACEP for 20 years. Hired by Dr. Dennis Beck, Dr. Jack Dillon, and Dr. Richard Talley, she has greatly surpassed the original three-year commitment she made to them! After holding positions with the State of Colorado EMS Division and Aurora Presbyterian Hospital (EMS Education), Ms. Burgess capitalized on her love of working with EMS providers by joining Colorado Advanced Life Support as their executive director. There, she had the opportunity to work with many distinguished physicians, including Dr. Doug Canham, Dr. Doug Hill, and Dr. Roger Barkin.

Through hard work and a bit of serendipity, Ms. Burgess became ACEP's Colorado Chapter Executive Director in 1995. The position has expanded her understanding of association management. From planning CME events to getting involved in the political landscape, there are always new challenges and rewards on the horizon.

Ms. Burgess was born and raised in Colorado, where the love of outdoor activities is mandatory. To keep things in perspective and remind her to relax, Ms. Burgess loves to travel with her friends and get in a game of golf every now and then. Just recently blessed with two beautiful granddaughters (Ashlyn and Averie), Ms. Burgess will tell you that although she loves ACEP, being a grandma is the best job yet! 🍷

Congratulations to all the winners!



TECHNOLOGY

WHO'S DRIVING CHANGE AT innovatED?

Somebody has to take charge, lead, come up with something new. Where is that person? You can find many of the trailblazers in the Exhibit Hall at innovatED. This space features products and services vetted by a team of emergency physicians that are showcased working together in a true-to-life environment. Engage in dialogue with the companies and experience the current thinking, departmental design solutions, cutting-edge products and services, and best practices driving change in the ED. This experience is particularly valuable for those looking to rebuild their emergency medicine services or bring their facility up to speed on new technologies.

Who's driving change in EM? The people and companies listed here.

PRESENTING SUPPORTERS



**Janssen Cardiovascular,
Pharmaceutical Companies of
Johnson and Johnson**
www.janssenpharmaceuticalsinc.com

As a member of the Janssen Pharmaceutical Companies, Janssen Pharmaceuticals, Inc. is dedicated to addressing and resolving the major unmet medical needs of our time. Driven by our commitment to patients, health care professionals, and caregivers, we strive to develop sustainable and integrated health care solutions by working in partnership with all stakeholders on the basis of trust and transparency. Our daily work is guided by meeting goals of excellence in quality, innovation, safety, and efficacy in order to advance patient care. For more information on Janssen Pharmaceuticals, Inc., visit us at www.janssenpharmaceuticalsinc.com.



Mallinckrodt Pharmaceuticals
www.mallinckrodt.com

Mallinckrodt is a global specialty biopharmaceutical and medical imaging business that develops, manufactures, markets, and distributes specialty pharmaceutical

products and medical imaging agents. Areas of focus include therapeutic drugs for autoimmune and rare disease specialty areas like neurology, rheumatology, nephrology, ophthalmology and pulmonology; neonatal critical care respiratory therapies; and analgesics and central nervous system drugs. The company's core strengths include the acquisition and management of highly regulated raw materials; deep regulatory expertise; and specialized chemistry, formulation, and manufacturing capabilities. The company's Specialty Brands segment includes branded medicines. Its Specialty Generics segment includes specialty generic drugs, active pharmaceutical ingredients and external manufacturing. The Global Medical Imaging segment includes contrast media and nuclear imaging agents. To learn more about Mallinckrodt, visit www.mallinckrodt.com.

"Mallinckrodt Pharmaceuticals is a global specialty biopharmaceutical company committed to providing products that help practitioners manage the pain of patients in the acute care hospital setting. We take pride in supporting ACEP and share a dedication to providing patients the highest quality and safest care."

—Jodi Devlin, Vice President and General Manager, Hospital Acute Care, Mallinckrodt Pharmaceuticals

SAMSUNG

Samsung
www.SamsungNeuroLogica.com

Samsung NeuroLogica, the health care subsidiary of Samsung Electronics Health & Medical Equipment Business, develops, manufactures, and markets innovative imaging technologies and is committed to delivering fast, easy, and accurate diagnostic solutions to health care providers. Samsung NeuroLogica's growing portfolio of advanced medical technologies are used worldwide in leading health care institutions, helping providers enhance patient care, improve patient satisfaction, and increase workflow efficiency. For more information, please visit www.SamsungNeuroLogica.com.

DIAMOND SUPPORTERS



Clarius Mobile Health
www.clarius.me

Founded by ultrasound innovators, Clarius Mobile Health aims to make ultrasound available to all clinicians. Clarius wireless handheld ultrasound scanners produce high-resolution

images and transmit them wirelessly to most iOS and Android smart devices. Our multipurpose Clarius C3 ultrasound scanners uniquely operate as a standard convex array probe to image the abdomen and lungs, and they work as a virtual phased array probe for cardiac imaging. Clarius L7 linear array ultrasound scanners are ideal for guiding procedures. With automated adjustments and frequency settings, Clarius Scanners are almost as easy to use as the camera on your smart phone.

"Emergency physicians and EMTs are excited about the Clarius scanner because it's small enough to carry around and produces great images that can be shared at the touch of a button on their phones. Clarius enables more clinicians to use ultrasound anywhere to improve patient care."

—Laurent Pelissier, CEO, Clarius Mobile Health



Collective Medical Technologies
www.collectivemedicaltech.com

Using real-time notifications and collaborative care planning tools, Collective Medical Technology's PreManage ED (or EDIE) closes the provider communication gaps that undermine patient care. Whenever a patient visits a hospital or other care setting and may be at risk of an adverse outcome, our tools immediately assess that risk, notify the most appropriate providers to engage, and then allow provider-to-provider coordination using high-value information and a patient-specific plan of care. PreManage ED is formally endorsed by ACEP as a best practice for emergency medicine.

"From the opioid epidemic to utilization management, the ED has been depicted too long as a problem and not as a solution. At CMT, we believe that with our care coordination technology that time is past!"

—Benjamin Zaniello MD, MPH, Collective Medical Technologies



Genentech
www.gene.com

Genentech is a leading biotechnology company that discovers, develops, manufactures, and commercializes medicines to treat patients with serious or life-threatening medical conditions. We are among the world's leading biotech companies, with multiple products on the market and a promising development pipeline.

HKS

HKS, Inc.
innovatED Designer
www.hksinc.com

For 77 years, HKS' culture has revered both invention and customer focus. Our world-wide network of architectural and engineering professionals operates from 24 offices working seamlessly as one firm. HKS is ranked one of the largest health care architects in the world. Our health experience includes over 3,000 projects totaling 280 million square feet, and we have received 239 design awards.

Our design process maximizes our clients' facility assets, raises patient/staff satisfaction, and helps improve patient outcomes. Utilizing operationally-based solutions to optimize workflow and streamline staff, we gather evidence on what works best and apply what we learn, practicing lean project delivery.

Of the Vertical Patient Treatment Area: "The patient who uses this space will say, 'Somebody thought about me.'"

—Jim Lennon, AIA, Senior Vice President, HKS, Inc

Of the Design with Exit Room: "HKS Team ED is a dedicated planning and design group focused on improving emergency department operations and design through the inclusion of industry best practices research and innovation."

—David R. Vincent, AIA Principal and Senior Vice-President, HKS, Inc.

Steelcase

HEALTH

Steelcase Health
www.steelcasehealth.com

Steelcase Health works with leading health care organizations to create places that deliver greater connection, empathy, and well-being for everyone involved in the experience of health.

"What's needed today are health environments that support discussion, and teaching, and learning, all characteristics conducive to partnership and patient engagement."

—Michelle Ossmann, MSN, PhD,
 Director of Healthcare Environments
 for Steelcase Health

stryker

Stryker
www.stryker.com

As one of the world's leading medical tech-

nology companies, Stryker provides state-of-the-art medical and surgical equipment. At every point of care, from the ambulance to the emergency department to the patient room, Stryker Medical provides support and service to help simplify health care delivery with safety and efficiency. Just as caregivers are committed to the well-being of their patients, Stryker is committed to their health and safety. Stryker products empower caregivers to do more with less.

VITAS[®] Healthcare

VITAS Healthcare
www.vitas.com

Join VITAS[®] Healthcare as they partner with the ACEP Palliative Care Section in presenting a specialized Palliative Care Comfort Room in innovatED. The room features physician interaction and informative clinical poster presentations. You'll also learn how VITAS lengthens the continuum of care and helps families cope with serious illness by providing palliative and hospice consults and care. Learn more about VITAS Healthcare at vitas.com.



ZS Pharma
www.zspharma.com

ZS Pharma was founded in 2008, and in December 2015, joined the AstraZeneca Group. ZS is dedicated to challenging the status quo in disease states where therapeutic options have been limited with innovative thinking, unique technology, and new approaches. Additional information is available at www.zspharma.com.

GOLD SUPPORTERS

American Heart Association
 B-Line Medical
 Edwards Lifesciences
 FUJIFILM SonoSite, Inc.
 Paladin Healthcare, LLC
 Teleflex Medical Incorporated
 Vapotherm, Inc.

DON'T MISS THE EVENTS AND ED TALKS BEING HELD AT INNOVATED TODAY. SEE P. 9 FOR SUNDAY'S SCHEDULE.

THANK YOU, ACEP CORPORATE SUPPORTERS

ACEP gratefully acknowledges the following commercial supporters for their support of the ACEP16 Scientific Assembly. These corporations make a significant impact on your cost and the features of ACEP16 and other ACEP meetings. Thanks to their contributions, the College is able to continue to offer the best educational program at the most affordable cost.

DIAMOND

Appriss Health
 EmCare
 ECI, a Schumacher Clinical Partner
 Schumacher Clinical Partners
 ScribeAmerica
 TeamHealth
 Teleflex
 US Acute Care Solutions

PLATINUM

AxelRx Pharmaceuticals
 CompHealth
 Ghost Productions
 Infinity Healthcare
 locumstory.com
 The Medicines Company
 VITAS Healthcare
 Weatherby Healthcare

SILVER

Alexza
 Cembra Pharmaceuticals
 HBi—Hagan Barron Intermediaries

ACEP EMERGENCY MEDICINE PODCAST

ACEP | Frontline

with Ryan Stanton, MD, FACEP

Hear in-depth conversations on the hottest topics in Emergency Medicine in this podcast series



EM
Podcast



Search for
ACEP Frontline



American College of
Emergency Physicians[®]
 ADVANCING EMERGENCY CARE



PRODUCT AND SERVICE SHOWCASES KEEP YOU UP TO SPEED



ACEP is proud to bring you the newly revamped Product Showcases. These educational and product-oriented sessions provide you with an in-depth presentation on a product or service you may have seen on the exhibit floor. Show up early—seating is limited to 150 and a boxed meal will be served at each event.

SUNDAY

Janssen Pharmaceuticals Product Showcase

Thrombosis: DVT/PE An Exploration in Risk Reduction

10:30–11:15 a.m.

Mandalay Bay Ballroom I Speaker: Adam Singer, MD

This lecture will discuss treatment options for patients with deep vein thrombosis and pulmonary embolism and how they can reduce the risk of recurrent thrombotic events.

Boehringer Ingelheim Pharmaceuticals Product Showcase

Moving Forward in Anticoagulation Care with the Availability of a Reversal Agent

10:30–11:15 a.m.

Mandalay Bay Ballroom K Speakers: Cres Miranda, MD, and James Williams, DO

Boehringer Ingelheim presents this session, featuring speakers Dr. Miranda, a cardiologist-interventional (cath lab) from the Nevada Heart & Vascular Center in Las Vegas, and Dr. Williams, clinical assistant professor of emergency medicine from Covenant Medical Center in Waterloo, Iowa.

Focus On Your Career with EMRA

THE EMERGENCY MEDICINE RESIDENTS ASSOCIATION (EMRA) is kicking off ACEP16 with activities to help you reach the next stage in your emergency medicine career. EMRA events come at no charge to residents and medical students. Here is today's lineup:

SUNDAY

EMRA Resident Lunch Lecture Series: Strategies for Board Prep

Noon-1:30 p.m.
Location: Mandalay Bay Ballroom H
Pre-registration required

Sponsored by CEP America

Learn board prep strategies from a panel discussion with a free lunch (first 200 pre-registered EMRA members only).

EMRA Job and Fellowship Fair

5-7 p.m.
Location: South Pacific Ballroom
Co-Sponsored by Florida Emergency Physicians and TeamHealth

Find your ideal job at the largest recruiting event in emergency medicine. More than 150 companies will showcase their career opportunities.

Thank You to Our EMRA Underwriters

The leadership and members of EMRA extend sincere appreciation to our gracious supporters who have helped to underwrite the costs of the EMRA events at ACEP16 Scientific Assembly. We could not accomplish all that we do without your generous support.

SIGNATURE LEVEL

CEP America
EmCare
Florida Emergency Physicians (FEP)
TeamHealth

PLATINUM LEVEL

ACEP
emCareers.org
Hippo Education
Hospital Corporation of America (HCA)
Infinity Healthcare

GOLD LEVEL

ApolloMD
University of Maryland

FRIEND LEVEL

DRB Student Loan
EB Medicine
EMPros
Gaumard
Independent Emergency Physician Consortium (IEPC)
InTrainingPrep.com
Ohio ACEP/Carol Rivers
EM Board Review

PEER IX

Rosh Review
Shayne Ruffing, Integrated
WealthCare
True Learn

MEDICAL STUDENT LUNCHEON

Beaumont Health
Drexel Emergency Medicine
Florida Atlantic University Emergency
Medicine Residency
Florida Hospital EM Residency
Grand Strand Medical Center
Penn State Hershey Medical Center
St. Barnabas EM Residency
St. Joseph's Regional Medical
Center/New York Medical College
Summa Akron City Hospital
SUNY Downstate Medical Center/
Kings County Hospital EM and EM/
IM Residency Programs
University of Alabama at Birmingham
University of Kentucky EM Residency
University of North Carolina
University of Pennsylvania
University of Wisconsin
Washington University in St. Louis
West Virginia University



Get LinkedIn at ACEP16

JOB HUNTING? LOOKING TO NETWORK? Just want to polish up your online presence? Visit the LinkedIn Corner in the Resource Center (Exhibit Hall, Sunday-Tuesday, 9:30 a.m.-3:30 p.m.).

Through powerful insights, you'll have your understanding of today's LinkedIn platform transformed, discuss profile do's and don'ts, and learn straightforward ways to reposition yourself as an expert and thought leader within your industry. You'll walk away knowing how to:

- Engage your professional network of contacts.
- Build connections that are useful and meaningful.

- Showcase yourself as a desirable, well-rounded professional.
- Share ideas to stand out and be sought out.

Improve interactions, build connections, and increase engagement by uncovering the myths and truths about creating an impactful LinkedIn profile. It's time to get the most out of LinkedIn. And don't leave ACEP16 without a fresh new headshot from Studio ACEP (located in ACEP Alley, Oceanside Foyer).

USE THE ACEP16 MOBILE APP

Maximize your experience! The app is available in the iOS App Store and the Google Play store. Use your login credentials from your ACEP16 registration to get schedules, syllabi, surveys, and the all-new ACEP GO game.



Essentia Health
Here with you

Our Essentia Health Team welcomes your questions about our Emergency Medicine openings!

Dr. Henry, ER Physician and CMO at Essentia Health and Carri Prudhomme, Physician Recruiter at Essentia Health will be on-site and available on Sunday, October 16th from 5p-7p at Mandalay Bay Hotel (table #323). We invite you to come and visit with us!

Essentia Health offers competitive compensation, health and dental benefits, CME allowance, relocation package, and more! We are located throughout three geographical locations and offer all the amenities of a metropolitan area, affordable housing, thriving economies, and great places to start your career and raise a family.

Contact: Carri.Prudhomme@EssentiaHealth.org or call Carri at 218-786-3908

www.essentiahealth.org/careers

EOE/M/F/Vet/Disabled



Let's make an impact at #ACEP16 in Las Vegas!

Stop by our booth #S2026 to scan your ACEP badge and cast your vote on which world-class charity will receive a **\$25,000** donation from TeamHealth.



CHILDREN
Sunrise Children's
Foundation



MEDICINE
Miracle Flights



FAMILY
Ronald McDonald
House Charities of
Greater Las Vegas



WELLNESS
American
Foundation for
Suicide Prevention



HUNGER
Three Square
Food Bank



HAVE COFFEE ON US:

Be one of the first 500 each day to cast your vote at our ACEP booth and receive a FREE Starbucks eCard!

TEAMHealth®

www.teamhealthcares.com